

Correction to “Gaussian Process Dynamical Models for Human Motion”

Jack M. Wang, David J. Fleet, Aaron Hertzmann
Department of Computer Science, University of Toronto

In the article “Gaussian Process Dynamical Models for Human Motion”, which appeared in Vol. 30, No. 2, February 2008 issue of IEEE Transactions on Pattern Analysis and Machine Intelligence, Figures 7 and 8 on page 292 should read as follows:

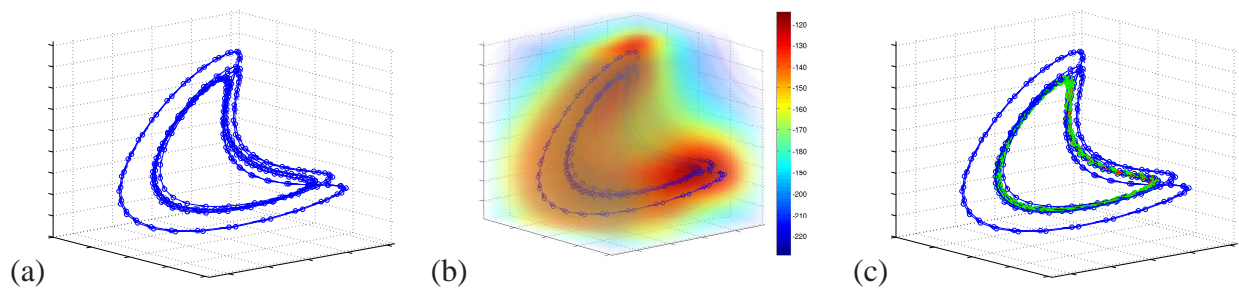


Fig. 7. Models learned with fixed $\bar{\alpha}$ from three different walking subjects. (a) The learned latent coordinates shown in blue. (b) $-\ln$ variance plot shows smooth high confidence regions, but the variance near data is larger than in Fig.5c, similar to B-GPDM. (c) Typical samples from the dynamic predictive distribution are shown in green, while the mean-prediction sample is shown in red.

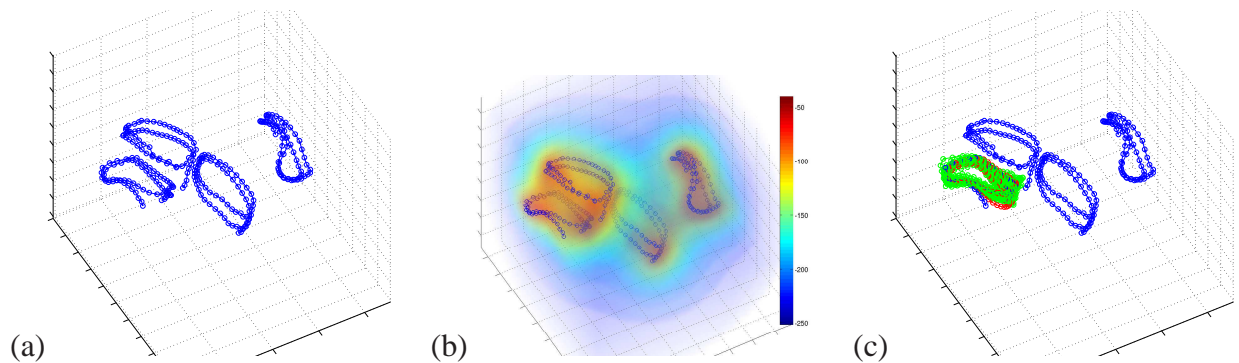


Fig. 8. Models learned with two-stage MAP from four different walking subjects. (a) The learned latent coordinates shown in blue, note the walkers are separated into distinct portions of the latent space. (b) $-\ln$ variance plot shows smooth high confidence regions, and the variance near data is similar to Fig.5c. (c) Typical samples from the dynamic predictive distribution are shown in green, while the mean-prediction sample is shown in red.